

TIMELESS PLANNING

THE FLOOR PLANS & UNIT PLANS

MASTER LAYOUT PLAN



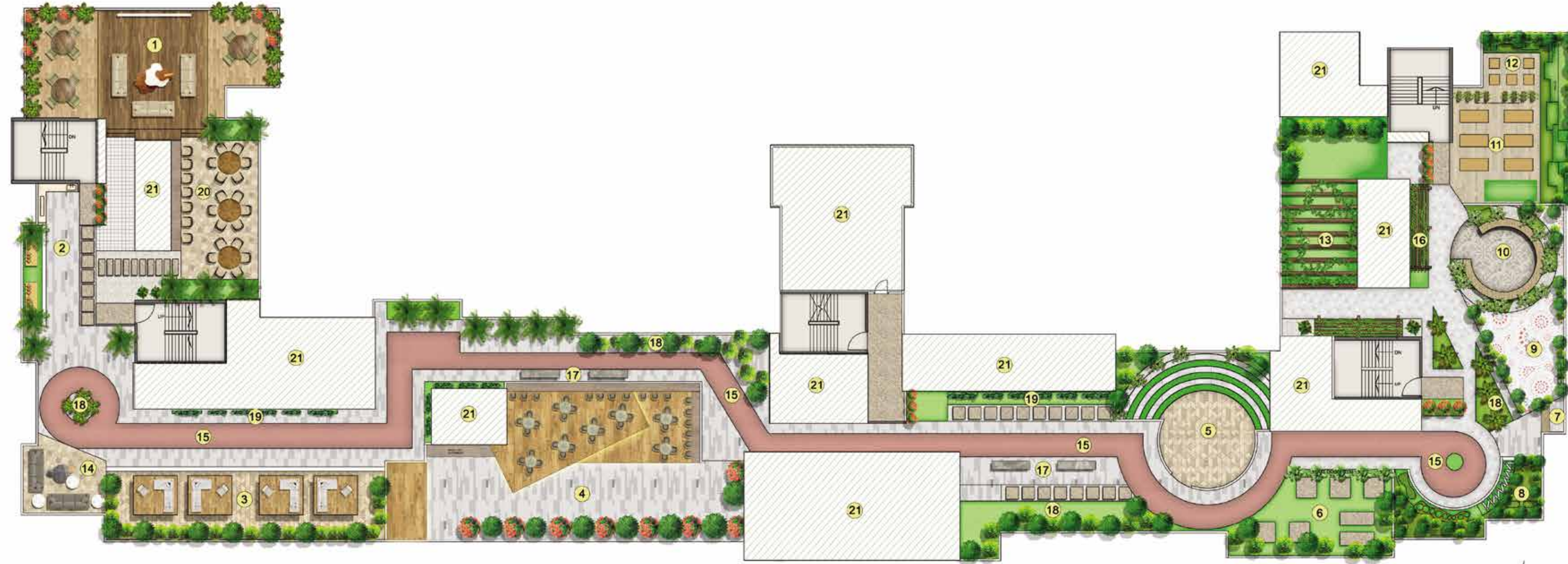
AMENITIES AT GROUND LEVEL

- | | |
|---------------------------------|-----------------------|
| 1. ENTRY/EXIT PORTAL | 14. LAWN SIT OUTS |
| 2. DROP OFF AREA | 15. INTERACTIVE AREA |
| 3. DOUBLE HEIGHT ENTRANCE LOBBY | 16. SELFIE WALL |
| 4. KIDS CRECHE AREA | 17. ART CRAFT SECTION |
| 5. HIGH STREET RETAIL | 18. PHOTO BOOTH |
| 6. SENIOR CITIZEN AREA | 19. TRELLIS |
| 7. REFLEXOLOGY PATH | 20. INFORMAL SIT OUTS |
| 8. MEDICINAL HERBS / PLANTS | 21. KIDS CYCLING PATH |
| 9. KIDS PLAY AREA | 22. CLUB |
| 10. TODDLERS PLAY ZONE | 23. LOTUS POND |
| 11. ROCK CLIMBING | 24. POOL DECK |
| 12. BUOY BALL SWINGS | 25. BAR COUNTER |
| 13. BALL EXERCISE | |

Maha RERA no: P51900005685 | Available at <https://maharera.mahaonline.gov.in>

Disclaimer: The images and other details herein are only indicative. The Developer/Owner reserves the right to change any or all of these in the interest of the development, as per provision of law. Artist's Impression are used to illustrate amenities, specifications, images and other details. Tolerance of +/- 3% is possible in the unit areas on account of design and construction variances. All brands stated are subject to final decision of the project architect. This electronic / printed material does not constitute an offer and/or contract of any type between the Developer / Owner and the recipient. No booking or allotment shall be deemed to have been made on the basis of this electronic / printed material. Any Purchaser / Lessee of this development shall be governed by the terms and conditions of the agreement for sale / lease entered into between the parties, and no details mentioned in this electronic / printed material shall in any way govern such transactions unless as may be otherwise expressly provided in the agreement for sale/lease by the Developer / Owner. The Developer / Owner does not warrant or assume any liability or responsibility for the accuracy or completeness or any information contained herein. Project presently financed by HDFC Bank Ltd and NOC/permission of HDFC Bank Ltd. will be obtained for sale of property, if required. This electronic / printed material has been created keeping in mind the provisions of the Real Estate (Regulation and Development) Act, 2016 (RERA) applicable for projects in Maharashtra. You are required to verify all the details, including area, amenities, services, terms of sales and payments and other relevant terms independently with the Developer sales team only, by physically visiting the project site and the authorized website of RERA. You are requested NOT to visit any unauthorized or unverified website/broker/(online / offline) to receive any information about any projects of the Developer and/or its sister concerns.

SKY PROMENADE



SKY PROMENADE AMENITIES

- | | |
|---------------------------|---------------------------|
| 1. SPORTS BAR | 11. YOGA DECK |
| 2. BARBEQUE AREA | 12. MEDITATION |
| 3. CABANA/ LOUNGE SEATING | 13. URBAN FARMING |
| 4. SUNDOWNER PARTY AREA | 14. SIT OUT AREA |
| 5. AMPHITHEATRE | 15. JOGGING TRACK |
| 6. OUTDOOR GYM | 16. PERGOLA WITH SEATINGS |
| 7. BAR/ JUICE COUNTER | 17. INFORMAL SEATINGS |
| 8. JUNGLE ADVENTURE | 18. LANDSCAPED GARDEN |
| 9. ART CAFE | 19. FEATURE WALL |
| 10. OUTDOOR LIBRARY | |

Maha RERA no: P51900005685 | Available at <https://maharera.mahaonline.gov.in>

Disclaimer: The images and other details herein are only indicative. The Developer/Owner reserves the right to change any or all of these in the interest of the development, as per provision of law. Artist's Impression are used to illustrate amenities, specifications, images and other details. Tolerance of +/- 3% is possible in the unit areas on account of design and construction variances. All brands stated are subject to final decision of the project architect. This electronic / printed material does not constitute an offer and/or contract of any type between the Developer / Owner and the recipient. No booking or allotment shall be deemed to have been made on the basis of this electronic / printed material. Any Purchaser / Lessee of this development shall be governed by the terms and conditions of the agreement for sale / lease entered into between the parties, and no details mentioned in this electronic / printed material shall in any way govern such transactions unless as may be otherwise expressly provided in the agreement for sale/lease by the Developer / Owner. The Developer / Owner does not warrant or assume any liability or responsibility for the accuracy or completeness or any information contained herein. Project presently financed by HDFC Bank Ltd and NOC/permission of HDFC Bank Ltd. will be obtained for sale of property, if required. This electronic / printed material has been created keeping in mind the provisions of the Real Estate (Regulation and Development) Act, 2016 (RERA) applicable for projects in Maharashtra. You are required to verify all the details, including area, amenities, services, terms of sales and payments and other relevant terms independently with the Developer sales team only, by physically visiting the project site and the authorized website of RERA. You are requested NOT to visit any unauthorized or unverified website/broker/(online / offline) to receive any information about any projects of the Developer and/or its sister concerns.

TYPICAL FLOOR PLAN - WING - B



Maha RERA no: P51900005685 | Available at <https://maharera.mahaonline.gov.in>

Disclaimer: The images and other details herein are only indicative. The Developer/Owner reserves the right to change any or all of these in the interest of the development, as per provision of law. Artist's Impression are used to illustrate amenities, specifications, images and other details. Tolerance of +/- 3% is possible in the unit areas on account of design and construction variances. All brands stated are subject to final decision of the project architect. This electronic / printed material does not constitute an offer and/or contract of any type between the Developer / Owner and the recipient. No booking or allotment shall be deemed to have been made on the basis of this electronic / printed material. Any Purchaser / Lessee of this development shall be governed by the terms and conditions of the agreement for sale / lease entered into between the parties, and no details mentioned in this electronic / printed material shall in any way govern such transactions unless as may be otherwise expressly provided in the agreement for sale/lease by the Developer / Owner. The Developer / Owner does not warrant or assume any liability or responsibility for the accuracy or completeness or any information contained herein. Project presently financed by HDFC Bank Ltd and NOC/permission of HDFC Bank Ltd. will be obtained for sale of property, if required. This electronic / printed material has been created keeping in mind the provisions of the Real Estate (Regulation and Development) Act, 2016 (RERA) applicable for projects in Maharashtra. You are required to verify all the details, including area, amenities, services, terms of sales and payments and other relevant terms independently with the Developer sales team only, by physically visiting the project site and the authorized website of RERA. You are requested NOT to visit any unauthorized or unverified website/broker/(online / offline) to receive any information about any projects of the Developer and/or its sister concerns.

TYPICAL FLOOR PLAN - WING - C



Maha RERA no: P51900005685 | Available at <https://maharera.mahaonline.gov.in>

Disclaimer: The images and other details herein are only indicative. The Developer/Owner reserves the right to change any or all of these in the interest of the development, as per provision of law. Artist's Impression are used to illustrate amenities, specifications, images and other details. Tolerance of +/- 3% is possible in the unit areas on account of design and construction variances. All brands stated are subject to final decision of the project architect. This electronic / printed material does not constitute an offer and/or contract of any type between the Developer / Owner and the recipient. No booking or allotment shall be deemed to have been made on the basis of this electronic / printed material. Any Purchaser / Lessee of this development shall be governed by the terms and conditions of the agreement for sale / lease entered into between the parties, and no details mentioned in this electronic / printed material shall in any way govern such transactions unless as may be otherwise expressly provided in the agreement for sale/lease by the Developer / Owner. The Developer / Owner does not warrant or assume any liability or responsibility for the accuracy or completeness or any information contained herein. Project presently financed by HDFC Bank Ltd and NOC/permission of HDFC Bank Ltd. will be obtained for sale of property, if required. This electronic / printed material has been created keeping in mind the provisions of the Real Estate (Regulation and Development) Act, 2016 (RERA) applicable for projects in Maharashtra. You are required to verify all the details, including area, amenities, services, terms of sales and payments and other relevant terms independently with the Developer sales team only, by physically visiting the project site and the authorized website of RERA. You are requested NOT to visit any unauthorized or unverified website/broker/(online / offline) to receive any information about any projects of the Developer and/or its sister concerns.

UNIT PLAN - WING - B

FLAT NO. 1 - 3 BED



Maha RERA no: P51900005685 | Available at <https://maharera.mahaonline.gov.in>

Disclaimer: The images and other details herein are only indicative. The Developer/Owner reserves the right to change any or all of these in the interest of the development, as per provision of law. Artist's Impression are used to illustrate amenities, specifications, images and other details. Tolerance of +/- 3% is possible in the unit areas on account of design and construction variances. All brands stated are subject to final decision of the project architect. This electronic / printed material does not constitute an offer and/or contract of any type between the Developer / Owner and the recipient. No booking or allotment shall be deemed to have been made on the basis of this electronic / printed material. Any Purchaser / Lessee of this development shall be governed by the terms and conditions of the agreement for sale / lease entered into between the parties, and no details mentioned in this electronic / printed material shall in any way govern such transactions unless as may be otherwise expressly provided in the agreement for sale/lease by the Developer / Owner. The Developer / Owner does not warrant or assume any liability or responsibility for the accuracy or completeness or any information contained herein. Project presently financed by HDFC Bank Ltd and NOC/permission of HDFC Bank Ltd. will be obtained for sale of property, if required. This electronic / printed material has been created keeping in mind the provisions of the Real Estate (Regulation and Development) Act, 2016 (RERA) applicable for projects in Maharashtra. You are required to verify all the details, including area, amenities, services, terms of sales and payments and other relevant terms independently with the Developer sales team only, by physically visiting the project site and the authorized website of RERA. You are requested NOT to visit any unauthorized or unverified website/broker/(online / offline) to receive any information about any projects of the Developer and/or its sister concerns.

UNIT PLAN - WING - B

FLAT NO. 2 - 2 BED



Maha RERA no: P51900005685 | Available at <https://maharera.mahaonline.gov.in>

Disclaimer: The images and other details herein are only indicative. The Developer/Owner reserves the right to change any or all of these in the interest of the development, as per provision of law. Artist's Impression are used to illustrate amenities, specifications, images and other details. Tolerance of +/- 3% is possible in the unit areas on account of design and construction variances. All brands stated are subject to final decision of the project architect. This electronic / printed material does not constitute an offer and/or contract of any type between the Developer / Owner and the recipient. No booking or allotment shall be deemed to have been made on the basis of this electronic / printed material. Any Purchaser / Lessee of this development shall be governed by the terms and conditions of the agreement for sale / lease entered into between the parties, and no details mentioned in this electronic / printed material shall in any way govern such transactions unless as may be otherwise expressly provided in the agreement for sale/lease by the Developer / Owner. The Developer / Owner does not warrant or assume any liability or responsibility for the accuracy or completeness or any information contained herein. Project presently financed by HDFC Bank Ltd and NOC/permission of HDFC Bank Ltd. will be obtained for sale of property, if required. This electronic / printed material has been created keeping in mind the provisions of the Real Estate (Regulation and Development) Act, 2016 (RERA) applicable for projects in Maharashtra. You are required to verify all the details, including area, amenities, services, terms of sales and payments and other relevant terms independently with the Developer sales team only, by physically visiting the project site and the authorized website of RERA. You are requested NOT to visit any unauthorized or unverified website/broker/(online / offline) to receive any information about any projects of the Developer and/or its sister concerns.

UNIT PLAN - WING - B

FLAT NO. 3 - 2 BED



Maha RERA no: P51900005685 | Available at <https://maharera.mahaonline.gov.in>

Disclaimer: The images and other details herein are only indicative. The Developer/Owner reserves the right to change any or all of these in the interest of the development, as per provision of law. Artist's Impression are used to illustrate amenities, specifications, images and other details. Tolerance of +/- 3% is possible in the unit areas on account of design and construction variances. All brands stated are subject to final decision of the project architect. This electronic / printed material does not constitute an offer and/or contract of any type between the Developer / Owner and the recipient. No booking or allotment shall be deemed to have been made on the basis of this electronic / printed material. Any Purchaser / Lessee of this development shall be governed by the terms and conditions of the agreement for sale / lease entered into between the parties, and no details mentioned in this electronic / printed material shall in any way govern such transactions unless as may be otherwise expressly provided in the agreement for sale/lease by the Developer / Owner. The Developer / Owner does not warrant or assume any liability or responsibility for the accuracy or completeness or any information contained herein. Project presently financed by HDFC Bank Ltd and NOC/permission of HDFC Bank Ltd. will be obtained for sale of property, if required. This electronic / printed material has been created keeping in mind the provisions of the Real Estate (Regulation and Development) Act, 2016 (RERA) applicable for projects in Maharashtra. You are required to verify all the details, including area, amenities, services, terms of sales and payments and other relevant terms independently with the Developer sales team only, by physically visiting the project site and the authorized website of RERA. You are requested NOT to visit any unauthorized or unverified website/broker/(online / offline) to receive any information about any projects of the Developer and/or its sister concerns.

UNIT PLAN - WING - B

FLAT NO. 4 - 2 BED



Maha RERA no: P51900005685 | Available at <https://maharera.mahaonline.gov.in>

Disclaimer: The images and other details herein are only indicative. The Developer/Owner reserves the right to change any or all of these in the interest of the development, as per provision of law. Artist's Impression are used to illustrate amenities, specifications, images and other details. Tolerance of +/- 3% is possible in the unit areas on account of design and construction variances. All brands stated are subject to final decision of the project architect. This electronic / printed material does not constitute an offer and/or contract of any type between the Developer / Owner and the recipient. No booking or allotment shall be deemed to have been made on the basis of this electronic / printed material. Any Purchaser / Lessee of this development shall be governed by the terms and conditions of the agreement for sale / lease entered into between the parties, and no details mentioned in this electronic / printed material shall in any way govern such transactions unless as may be otherwise expressly provided in the agreement for sale/lease by the Developer / Owner. The Developer / Owner does not warrant or assume any liability or responsibility for the accuracy or completeness or any information contained herein. Project presently financed by HDFC Bank Ltd and NOC/permission of HDFC Bank Ltd. will be obtained for sale of property, if required. This electronic / printed material has been created keeping in mind the provisions of the Real Estate (Regulation and Development) Act, 2016 (RERA) applicable for projects in Maharashtra. You are required to verify all the details, including area, amenities, services, terms of sales and payments and other relevant terms independently with the Developer sales team only, by physically visiting the project site and the authorized website of RERA. You are requested NOT to visit any unauthorized or unverified website/broker/(online / offline) to receive any information about any projects of the Developer and/or its sister concerns.

UNIT PLAN - WING - B

FLAT NO. 5 - 3 BED



Maha RERA no: P51900005685 | Available at <https://maharera.mahaonline.gov.in>

Disclaimer: The images and other details herein are only indicative. The Developer/Owner reserves the right to change any or all of these in the interest of the development, as per provision of law. Artist's Impression are used to illustrate amenities, specifications, images and other details. Tolerance of +/- 3% is possible in the unit areas on account of design and construction variances. All brands stated are subject to final decision of the project architect. This electronic / printed material does not constitute an offer and/or contract of any type between the Developer / Owner and the recipient. No booking or allotment shall be deemed to have been made on the basis of this electronic / printed material. Any Purchaser / Lessee of this development shall be governed by the terms and conditions of the agreement for sale / lease entered into between the parties, and no details mentioned in this electronic / printed material shall in any way govern such transactions unless as may be otherwise expressly provided in the agreement for sale/lease by the Developer / Owner. The Developer / Owner does not warrant or assume any liability or responsibility for the accuracy or completeness or any information contained herein. Project presently financed by HDFC Bank Ltd and NOC/permission of HDFC Bank Ltd. will be obtained for sale of property, if required. This electronic / printed material has been created keeping in mind the provisions of the Real Estate (Regulation and Development) Act, 2016 (RERA) applicable for projects in Maharashtra. You are required to verify all the details, including area, amenities, services, terms of sales and payments and other relevant terms independently with the Developer sales team only, by physically visiting the project site and the authorized website of RERA. You are requested NOT to visit any unauthorized or unverified website/broker/(online / offline) to receive any information about any projects of the Developer and/or its sister concerns.

UNIT PLAN - WING - B

FLAT NO. 6 - 3 BED



Maha RERA no: P51900005685 | Available at <https://maharera.mahaonline.gov.in>

Disclaimer: The images and other details herein are only indicative. The Developer/Owner reserves the right to change any or all of these in the interest of the development, as per provision of law. Artist's Impression are used to illustrate amenities, specifications, images and other details. Tolerance of +/- 3% is possible in the unit areas on account of design and construction variances. All brands stated are subject to final decision of the project architect. This electronic / printed material does not constitute an offer and/or contract of any type between the Developer / Owner and the recipient. No booking or allotment shall be deemed to have been made on the basis of this electronic / printed material. Any Purchaser / Lessee of this development shall be governed by the terms and conditions of the agreement for sale / lease entered into between the parties, and no details mentioned in this electronic / printed material shall in any way govern such transactions unless as may be otherwise expressly provided in the agreement for sale/lease by the Developer / Owner. The Developer / Owner does not warrant or assume any liability or responsibility for the accuracy or completeness or any information contained herein. Project presently financed by HDFC Bank Ltd and NOC/permission of HDFC Bank Ltd. will be obtained for sale of property, if required. This electronic / printed material has been created keeping in mind the provisions of the Real Estate (Regulation and Development) Act, 2016 (RERA) applicable for projects in Maharashtra. You are required to verify all the details, including area, amenities, services, terms of sales and payments and other relevant terms independently with the Developer sales team only, by physically visiting the project site and the authorized website of RERA. You are requested NOT to visit any unauthorized or unverified website/broker/(online / offline) to receive any information about any projects of the Developer and/or its sister concerns.

UNIT PLAN - WING - C

FLAT NO. 1 - 2 BED



Maha RERA no: P51900005685 | Available at <https://maharera.mahaonline.gov.in>

Disclaimer: The images and other details herein are only indicative. The Developer/Owner reserves the right to change any or all of these in the interest of the development, as per provision of law. Artist's Impression are used to illustrate amenities, specifications, images and other details. Tolerance of +/- 3% is possible in the unit areas on account of design and construction variances. All brands stated are subject to final decision of the project architect. This electronic / printed material does not constitute an offer and/or contract of any type between the Developer / Owner and the recipient. No booking or allotment shall be deemed to have been made on the basis of this electronic / printed material. Any Purchaser / Lessee of this development shall be governed by the terms and conditions of the agreement for sale / lease entered into between the parties, and no details mentioned in this electronic / printed material shall in any way govern such transactions unless as may be otherwise expressly provided in the agreement for sale/lease by the Developer / Owner. The Developer / Owner does not warrant or assume any liability or responsibility for the accuracy or completeness or any information contained herein. Project presently financed by HDFC Bank Ltd and NOC/permission of HDFC Bank Ltd. will be obtained for sale of property, if required. This electronic / printed material has been created keeping in mind the provisions of the Real Estate (Regulation and Development) Act, 2016 (RERA) applicable for projects in Maharashtra. You are required to verify all the details, including area, amenities, services, terms of sales and payments and other relevant terms independently with the Developer sales team only, by physically visiting the project site and the authorized website of RERA. You are requested NOT to visit any unauthorized or unverified website/broker/(online / offline) to receive any information about any projects of the Developer and/or its sister concerns.

UNIT PLAN - WING - C

FLAT NO. 2 - 2 BED



Maha RERA no: P51900005685 | Available at <https://maharera.mahaonline.gov.in>

Disclaimer: The images and other details herein are only indicative. The Developer/Owner reserves the right to change any or all of these in the interest of the development, as per provision of law. Artist's Impression are used to illustrate amenities, specifications, images and other details. Tolerance of +/- 3% is possible in the unit areas on account of design and construction variances. All brands stated are subject to final decision of the project architect. This electronic / printed material does not constitute an offer and/or contract of any type between the Developer / Owner and the recipient. No booking or allotment shall be deemed to have been made on the basis of this electronic / printed material. Any Purchaser / Lessee of this development shall be governed by the terms and conditions of the agreement for sale / lease entered into between the parties, and no details mentioned in this electronic / printed material shall in any way govern such transactions unless as may be otherwise expressly provided in the agreement for sale/lease by the Developer / Owner. The Developer / Owner does not warrant or assume any liability or responsibility for the accuracy or completeness or any information contained herein. Project presently financed by HDFC Bank Ltd and NOC/permission of HDFC Bank Ltd. will be obtained for sale of property, if required. This electronic / printed material has been created keeping in mind the provisions of the Real Estate (Regulation and Development) Act, 2016 (RERA) applicable for projects in Maharashtra. You are required to verify all the details, including area, amenities, services, terms of sales and payments and other relevant terms independently with the Developer sales team only, by physically visiting the project site and the authorized website of RERA. You are requested NOT to visit any unauthorized or unverified website/broker/(online / offline) to receive any information about any projects of the Developer and/or its sister concerns.

UNIT PLAN - WING - C

FLAT NO. 3 - 2 BED



Maha RERA no: P51900005685 | Available at <https://maharera.mahaonline.gov.in>

Disclaimer: The images and other details herein are only indicative. The Developer/Owner reserves the right to change any or all of these in the interest of the development, as per provision of law. Artist's Impression are used to illustrate amenities, specifications, images and other details. Tolerance of +/- 3% is possible in the unit areas on account of design and construction variances. All brands stated are subject to final decision of the project architect. This electronic / printed material does not constitute an offer and/or contract of any type between the Developer / Owner and the recipient. No booking or allotment shall be deemed to have been made on the basis of this electronic / printed material. Any Purchaser / Lessee of this development shall be governed by the terms and conditions of the agreement for sale / lease entered into between the parties, and no details mentioned in this electronic / printed material shall in any way govern such transactions unless as may be otherwise expressly provided in the agreement for sale/lease by the Developer / Owner. The Developer / Owner does not warrant or assume any liability or responsibility for the accuracy or completeness or any information contained herein. Project presently financed by HDFC Bank Ltd and NOC/permission of HDFC Bank Ltd. will be obtained for sale of property, if required. This electronic / printed material has been created keeping in mind the provisions of the Real Estate (Regulation and Development) Act, 2016 (RERA) applicable for projects in Maharashtra. You are required to verify all the details, including area, amenities, services, terms of sales and payments and other relevant terms independently with the Developer sales team only, by physically visiting the project site and the authorized website of RERA. You are requested NOT to visit any unauthorized or unverified website/broker/(online / offline) to receive any information about any projects of the Developer and/or its sister concerns.

UNIT PLAN - WING - C

FLAT NO. 4 - 2 BED



Maha RERA no: P51900005685 | Available at <https://maharera.mahaonline.gov.in>

Disclaimer: The images and other details herein are only indicative. The Developer/Owner reserves the right to change any or all of these in the interest of the development, as per provision of law. Artist's Impression are used to illustrate amenities, specifications, images and other details. Tolerance of +/- 3% is possible in the unit areas on account of design and construction variances. All brands stated are subject to final decision of the project architect. This electronic / printed material does not constitute an offer and/or contract of any type between the Developer / Owner and the recipient. No booking or allotment shall be deemed to have been made on the basis of this electronic / printed material. Any Purchaser / Lessee of this development shall be governed by the terms and conditions of the agreement for sale / lease entered into between the parties, and no details mentioned in this electronic / printed material shall in any way govern such transactions unless as may be otherwise expressly provided in the agreement for sale/lease by the Developer / Owner. The Developer / Owner does not warrant or assume any liability or responsibility for the accuracy or completeness or any information contained herein. Project presently financed by HDFC Bank Ltd and NOC/permission of HDFC Bank Ltd. will be obtained for sale of property, if required. This electronic / printed material has been created keeping in mind the provisions of the Real Estate (Regulation and Development) Act, 2016 (RERA) applicable for projects in Maharashtra. You are required to verify all the details, including area, amenities, services, terms of sales and payments and other relevant terms independently with the Developer sales team only, by physically visiting the project site and the authorized website of RERA. You are requested NOT to visit any unauthorized or unverified website/broker/(online / offline) to receive any information about any projects of the Developer and/or its sister concerns.

UNIT PLAN - WING - C

FLAT NO. 5 - 2 BED



Maha RERA no: P51900005685 | Available at <https://maharera.mahaonline.gov.in>

Disclaimer: The images and other details herein are only indicative. The Developer/Owner reserves the right to change any or all of these in the interest of the development, as per provision of law. Artist's Impression are used to illustrate amenities, specifications, images and other details. Tolerance of +/- 3% is possible in the unit areas on account of design and construction variances. All brands stated are subject to final decision of the project architect. This electronic / printed material does not constitute an offer and/or contract of any type between the Developer / Owner and the recipient. No booking or allotment shall be deemed to have been made on the basis of this electronic / printed material. Any Purchaser / Lessee of this development shall be governed by the terms and conditions of the agreement for sale / lease entered into between the parties, and no details mentioned in this electronic / printed material shall in any way govern such transactions unless as may be otherwise expressly provided in the agreement for sale/lease by the Developer / Owner. The Developer / Owner does not warrant or assume any liability or responsibility for the accuracy or completeness or any information contained herein. Project presently financed by HDFC Bank Ltd and NOC/permission of HDFC Bank Ltd. will be obtained for sale of property, if required. This electronic / printed material has been created keeping in mind the provisions of the Real Estate (Regulation and Development) Act, 2016 (RERA) applicable for projects in Maharashtra. You are required to verify all the details, including area, amenities, services, terms of sales and payments and other relevant terms independently with the Developer sales team only, by physically visiting the project site and the authorized website of RERA. You are requested NOT to visit any unauthorized or unverified website/broker/(online / offline) to receive any information about any projects of the Developer and/or its sister concerns.

UNIT PLAN - WING - C

FLAT NO. 6 - 1 BED

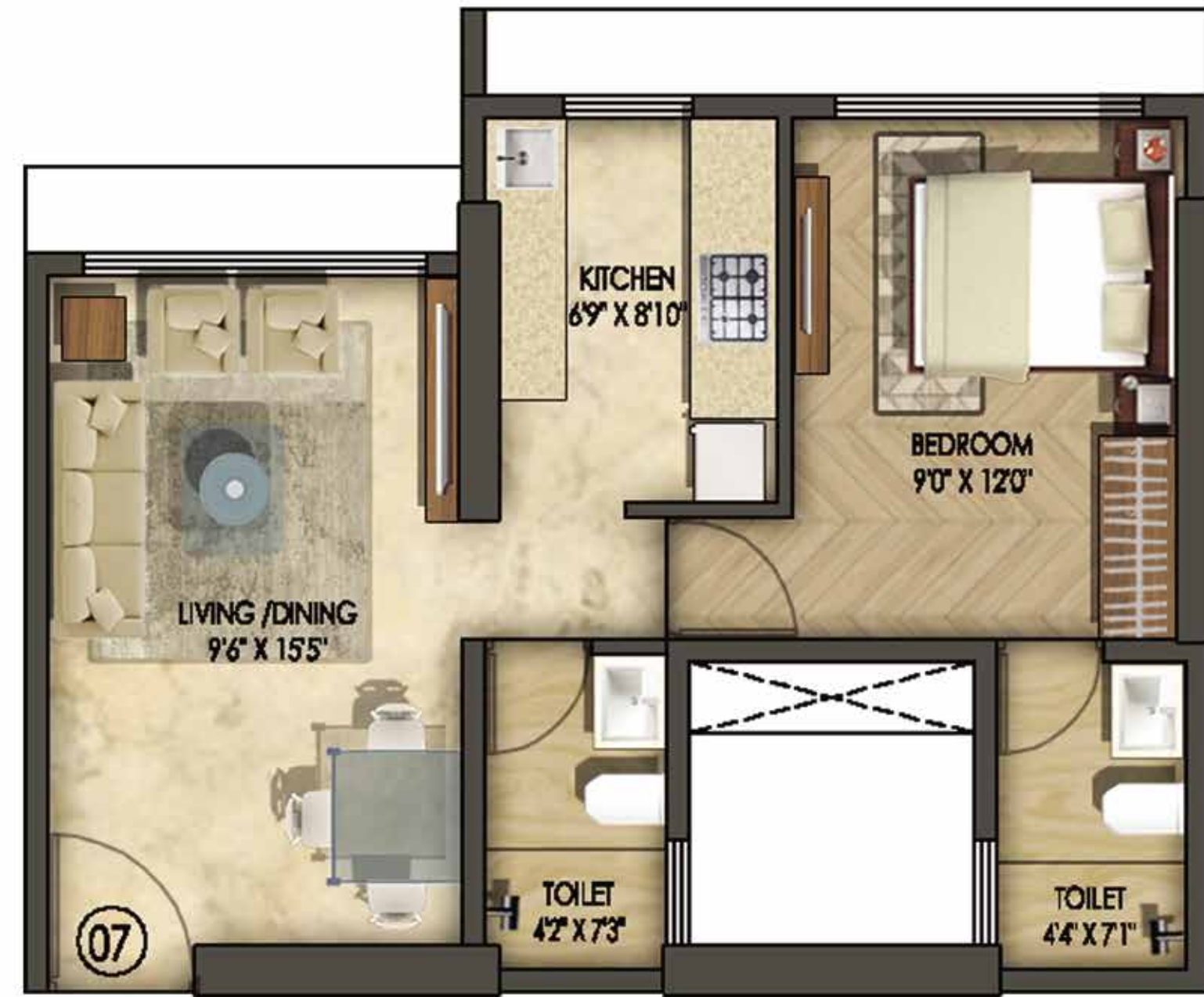


Maha RERA no: P51900005685 | Available at <https://maharera.mahaonline.gov.in>

Disclaimer: The images and other details herein are only indicative. The Developer/Owner reserves the right to change any or all of these in the interest of the development, as per provision of law. Artist's Impression are used to illustrate amenities, specifications, images and other details. Tolerance of +/- 3% is possible in the unit areas on account of design and construction variances. All brands stated are subject to final decision of the project architect. This electronic / printed material does not constitute an offer and/or contract of any type between the Developer / Owner and the recipient. No booking or allotment shall be deemed to have been made on the basis of this electronic / printed material. Any Purchaser / Lessee of this development shall be governed by the terms and conditions of the agreement for sale / lease entered into between the parties, and no details mentioned in this electronic / printed material shall in any way govern such transactions unless as may be otherwise expressly provided in the agreement for sale/lease by the Developer / Owner. The Developer / Owner does not warrant or assume any liability or responsibility for the accuracy or completeness or any information contained herein. Project presently financed by HDFC Bank Ltd and NOC/permission of HDFC Bank Ltd. will be obtained for sale of property, if required. This electronic / printed material has been created keeping in mind the provisions of the Real Estate (Regulation and Development) Act, 2016 (RERA) applicable for projects in Maharashtra. You are required to verify all the details, including area, amenities, services, terms of sales and payments and other relevant terms independently with the Developer sales team only, by physically visiting the project site and the authorized website of RERA. You are requested NOT to visit any unauthorized or unverified website/broker/(online / offline) to receive any information about any projects of the Developer and/or its sister concerns.

UNIT PLAN - WING - C

FLAT NO. 7 - 1 BED

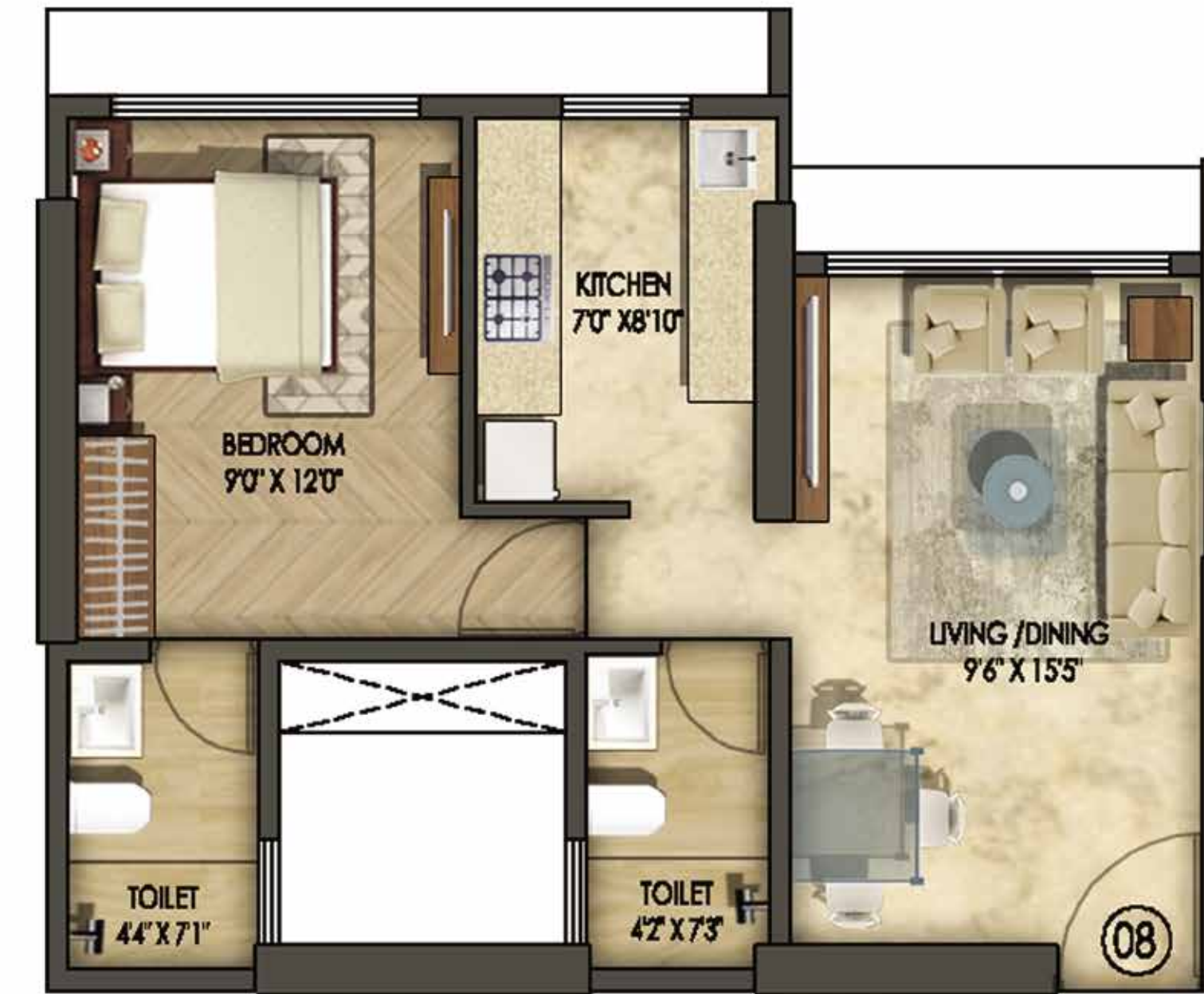


Maha RERA no: P51900005685 | Available at <https://maharera.mahaonline.gov.in>

Disclaimer: The images and other details herein are only indicative. The Developer/Owner reserves the right to change any or all of these in the interest of the development, as per provision of law. Artist's Impression are used to illustrate amenities, specifications, images and other details. Tolerance of +/- 3% is possible in the unit areas on account of design and construction variances. All brands stated are subject to final decision of the project architect. This electronic / printed material does not constitute an offer and/or contract of any type between the Developer / Owner and the recipient. No booking or allotment shall be deemed to have been made on the basis of this electronic / printed material. Any Purchaser / Lessee of this development shall be governed by the terms and conditions of the agreement for sale / lease entered into between the parties, and no details mentioned in this electronic / printed material shall in any way govern such transactions unless as may be otherwise expressly provided in the agreement for sale/lease by the Developer / Owner. The Developer / Owner does not warrant or assume any liability or responsibility for the accuracy or completeness or any information contained herein. Project presently financed by HDFC Bank Ltd and NOC/permission of HDFC Bank Ltd. will be obtained for sale of property, if required. This electronic / printed material has been created keeping in mind the provisions of the Real Estate (Regulation and Development) Act, 2016 (RERA) applicable for projects in Maharashtra. You are required to verify all the details, including area, amenities, services, terms of sales and payments and other relevant terms independently with the Developer sales team only, by physically visiting the project site and the authorized website of RERA. You are requested NOT to visit any unauthorized or unverified website/broker/(online / offline) to receive any information about any projects of the Developer and/or its sister concerns.

UNIT PLAN - WING - C

FLAT NO. 8 - 1 BED

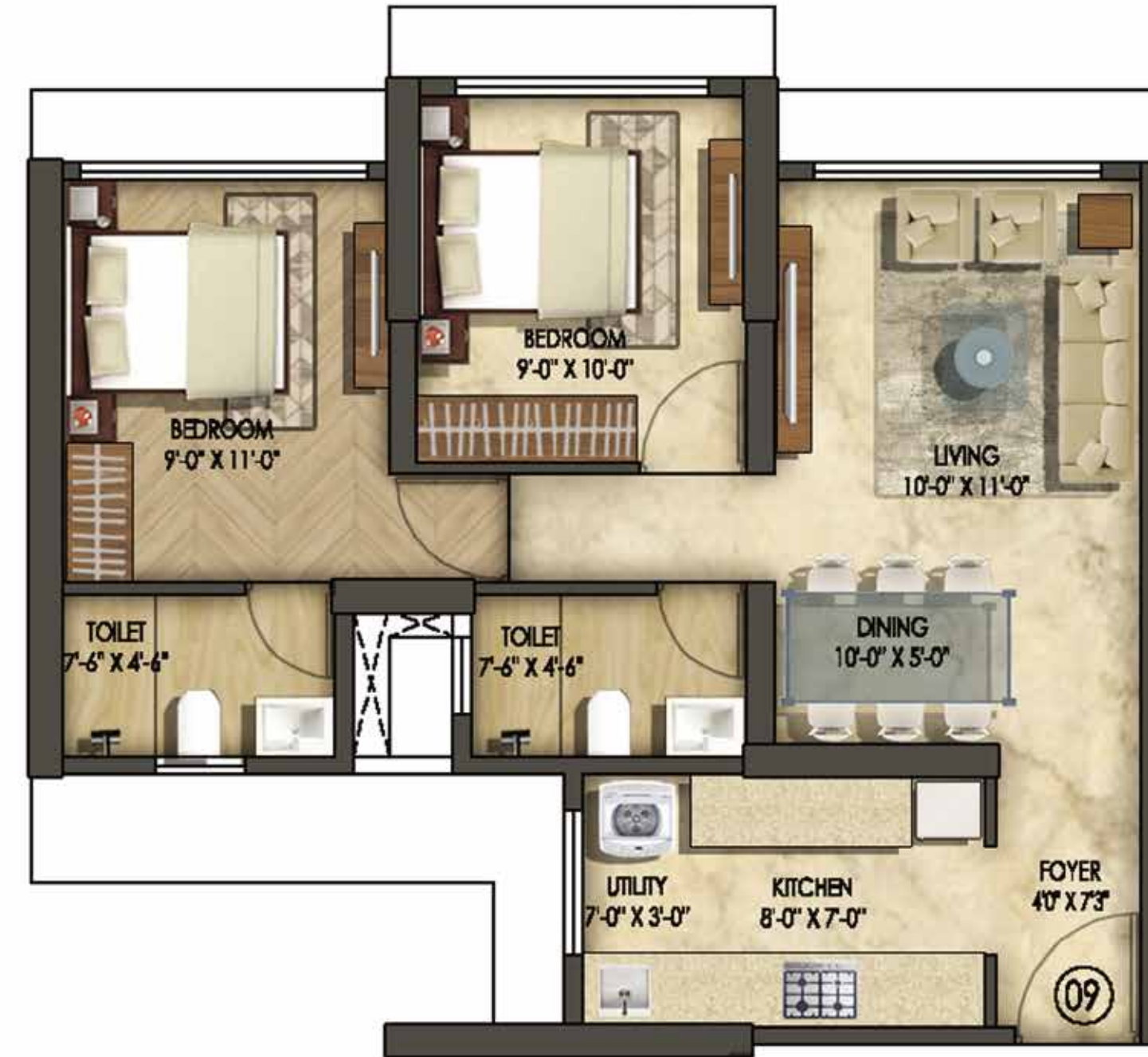


Maha RERA no: P51900005685 | Available at <https://maharera.mahaonline.gov.in>

Disclaimer: The images and other details herein are only indicative. The Developer/Owner reserves the right to change any or all of these in the interest of the development, as per provision of law. Artist's Impression are used to illustrate amenities, specifications, images and other details. Tolerance of +/- 3% is possible in the unit areas on account of design and construction variances. All brands stated are subject to final decision of the project architect. This electronic / printed material does not constitute an offer and/or contract of any type between the Developer / Owner and the recipient. No booking or allotment shall be deemed to have been made on the basis of this electronic / printed material. Any Purchaser / Lessee of this development shall be governed by the terms and conditions of the agreement for sale / lease entered into between the parties, and no details mentioned in this electronic / printed material shall in any way govern such transactions unless as may be otherwise expressly provided in the agreement for sale/lease by the Developer / Owner. The Developer / Owner does not warrant or assume any liability or responsibility for the accuracy or completeness or any information contained herein. Project presently financed by HDFC Bank Ltd and NOC/permission of HDFC Bank Ltd. will be obtained for sale of property, if required. This electronic / printed material has been created keeping in mind the provisions of the Real Estate (Regulation and Development) Act, 2016 (RERA) applicable for projects in Maharashtra. You are required to verify all the details, including area, amenities, services, terms of sales and payments and other relevant terms independently with the Developer sales team only, by physically visiting the project site and the authorized website of RERA. You are requested NOT to visit any unauthorized or unverified website/broker/(online / offline) to receive any information about any projects of the Developer and/or its sister concerns.

UNIT PLAN - WING - C

FLAT NO. 9 - 2 BED



Maha RERA no: P51900005685 | Available at <https://maharera.mahaonline.gov.in>

Disclaimer: The images and other details herein are only indicative. The Developer/Owner reserves the right to change any or all of these in the interest of the development, as per provision of law. Artist's Impression are used to illustrate amenities, specifications, images and other details. Tolerance of +/- 3% is possible in the unit areas on account of design and construction variances. All brands stated are subject to final decision of the project architect. This electronic / printed material does not constitute an offer and/or contract of any type between the Developer / Owner and the recipient. No booking or allotment shall be deemed to have been made on the basis of this electronic / printed material. Any Purchaser / Lessee of this development shall be governed by the terms and conditions of the agreement for sale / lease entered into between the parties, and no details mentioned in this electronic / printed material shall in any way govern such transactions unless as may be otherwise expressly provided in the agreement for sale/lease by the Developer / Owner. The Developer / Owner does not warrant or assume any liability or responsibility for the accuracy or completeness or any information contained herein. Project presently financed by HDFC Bank Ltd and NOC/permission of HDFC Bank Ltd. will be obtained for sale of property, if required. This electronic / printed material has been created keeping in mind the provisions of the Real Estate (Regulation and Development) Act, 2016 (RERA) applicable for projects in Maharashtra. You are required to verify all the details, including area, amenities, services, terms of sales and payments and other relevant terms independently with the Developer sales team only, by physically visiting the project site and the authorized website of RERA. You are requested NOT to visit any unauthorized or unverified website/broker/(online / offline) to receive any information about any projects of the Developer and/or its sister concerns.

UNIT PLAN - WING - C

FLAT NO. 10 - 2 BED



Maha RERA no: P51900005685 | Available at <https://maharera.mahaonline.gov.in>

Disclaimer: The images and other details herein are only indicative. The Developer/Owner reserves the right to change any or all of these in the interest of the development, as per provision of law. Artist's Impression are used to illustrate amenities, specifications, images and other details. Tolerance of +/- 3% is possible in the unit areas on account of design and construction variances. All brands stated are subject to final decision of the project architect. This electronic / printed material does not constitute an offer and/or contract of any type between the Developer / Owner and the recipient. No booking or allotment shall be deemed to have been made on the basis of this electronic / printed material. Any Purchaser / Lessee of this development shall be governed by the terms and conditions of the agreement for sale / lease entered into between the parties, and no details mentioned in this electronic / printed material shall in any way govern such transactions unless as may be otherwise expressly provided in the agreement for sale/lease by the Developer / Owner. The Developer / Owner does not warrant or assume any liability or responsibility for the accuracy or completeness or any information contained herein. Project presently financed by HDFC Bank Ltd and NOC/permission of HDFC Bank Ltd. will be obtained for sale of property, if required. This electronic / printed material has been created keeping in mind the provisions of the Real Estate (Regulation and Development) Act, 2016 (RERA) applicable for projects in Maharashtra. You are required to verify all the details, including area, amenities, services, terms of sales and payments and other relevant terms independently with the Developer sales team only, by physically visiting the project site and the authorized website of RERA. You are requested NOT to visit any unauthorized or unverified website/broker/(online / offline) to receive any information about any projects of the Developer and/or its sister concerns.

UNIT PLAN - WING - C

FLAT NO. 11 - 2 BED



Maha RERA no: P51900005685 | Available at <https://maharera.mahaonline.gov.in>

Disclaimer: The images and other details herein are only indicative. The Developer/Owner reserves the right to change any or all of these in the interest of the development, as per provision of law. Artist's Impression are used to illustrate amenities, specifications, images and other details. Tolerance of +/- 3% is possible in the unit areas on account of design and construction variances. All brands stated are subject to final decision of the project architect. This electronic / printed material does not constitute an offer and/or contract of any type between the Developer / Owner and the recipient. No booking or allotment shall be deemed to have been made on the basis of this electronic / printed material. Any Purchaser / Lessee of this development shall be governed by the terms and conditions of the agreement for sale / lease entered into between the parties, and no details mentioned in this electronic / printed material shall in any way govern such transactions unless as may be otherwise expressly provided in the agreement for sale/lease by the Developer / Owner. The Developer / Owner does not warrant or assume any liability or responsibility for the accuracy or completeness or any information contained herein. Project presently financed by HDFC Bank Ltd and NOC/permission of HDFC Bank Ltd. will be obtained for sale of property, if required. This electronic / printed material has been created keeping in mind the provisions of the Real Estate (Regulation and Development) Act, 2016 (RERA) applicable for projects in Maharashtra. You are required to verify all the details, including area, amenities, services, terms of sales and payments and other relevant terms independently with the Developer sales team only, by physically visiting the project site and the authorized website of RERA. You are requested NOT to visit any unauthorized or unverified website/broker/(online / offline) to receive any information about any projects of the Developer and/or its sister concerns.

B WING

FLAT NO.	CONFIGURATION	CARPET AREA (SQ. FT.)	DECK / BALCONY (SQ. FT.)
1	3 BHK	841	74
2	2 BHK	663	74
3	2 BHK	653	38
4	2 BHK	640	75
5	3 BHK	841	74
6	3 BHK	914	88

C WING

FLAT NO.	CONFIGURATION	CARPET AREA (SQ. FT.)	DECK / BALCONY (SQ. FT.)
1	2 BHK	643	0
2	2 BHK	644	0
3	2 BHK	623	44
4	2 BHK	623	44
5	2 BHK	623	46
6	1 BHK	422	0
7	1 BHK	418	0
8	1 BHK	418	0
9	2 BHK	583	0
10	2 BHK	583	0
11	2 BHK	638	0

Maha RERA no: P51900005685 | Available at <https://maharera.mahaonline.gov.in>

Disclaimer: The images and other details herein are only indicative. The Developer/Owner reserves the right to change any or all of these in the interest of the development, as per provision of law. Artist's Impression are used to illustrate amenities, specifications, images and other details. Tolerance of +/- 3% is possible in the unit areas on account of design and construction variances. All brands stated are subject to final decision of the project architect. This electronic / printed material does not constitute an offer and/or contract of any type between the Developer / Owner and the recipient. No booking or allotment shall be deemed to have been made on the basis of this electronic / printed material. Any Purchaser / Lessee of this development shall be governed by the terms and conditions of the agreement for sale / lease entered into between the parties, and no details mentioned in this electronic / printed material shall in any way govern such transactions unless as may be otherwise expressly provided in the agreement for sale/lease by the Developer / Owner. The Developer / Owner does not warrant or assume any liability or responsibility for the accuracy or completeness or any information contained herein. Project presently financed by HDFC Bank Ltd and NOC/permission of HDFC Bank Ltd. will be obtained for sale of property, if required. This electronic / printed material has been created keeping in mind the provisions of the Real Estate (Regulation and Development) Act, 2016 (RERA) applicable for projects in Maharashtra. You are required to verify all the details, including area, amenities, services, terms of sales and payments and other relevant terms independently with the Developer sales team only, by physically visiting the project site and the authorized website of RERA. You are requested NOT to visit any unauthorized or unverified website/broker/(online / offline) to receive any information about any projects of the Developer and/or its sister concerns.